

line ex 100 sqw soil drain
 semi-eng gut sides - steel cover + frame
 100 pvc
 100 pvc seop.

wet bath waste to 100
 pvc seop - surge valve
 set 1 m above fl - 32 pvc
 bath waste + 76 pvc trap.

Man. cont. elec
 ext. fans set ceil
 level. min 15/like
 sec cap.

100x50 studwk off double
 joist - voids filled f'glass
 faced 12 pbd + skim.

pipe encased 12 pbd +
 fire stopped to wall.

UNIT. 2

Approx 149.7 M² (1611 sq ft) excl ent hall.

UNIT. 1.

Approx 83 M² (894 sq ft).

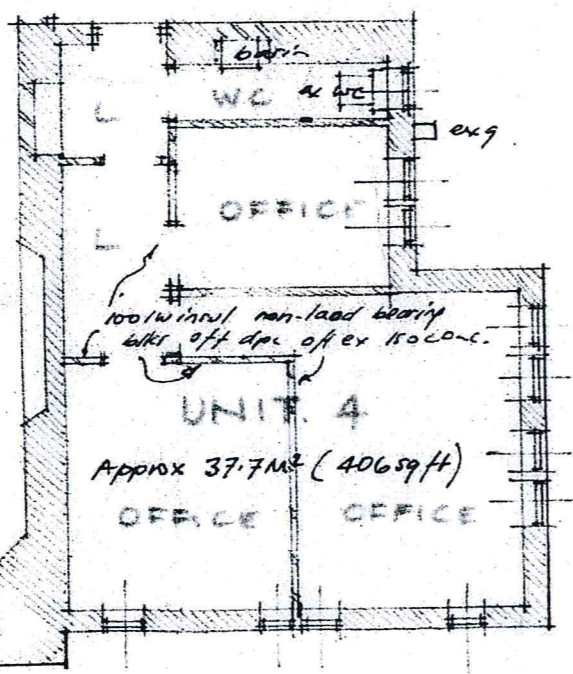
UNIT. 5.

Approx 84.4 M² (908 sq ft)

100x50 studwk off double joist
 f'glass fill. to voids
 faced 12 pbd + skim.

230/w blk wall
 Furfix connect
 at ends of
 2/ho 203x133x
 30kg UB's bolted
 together.

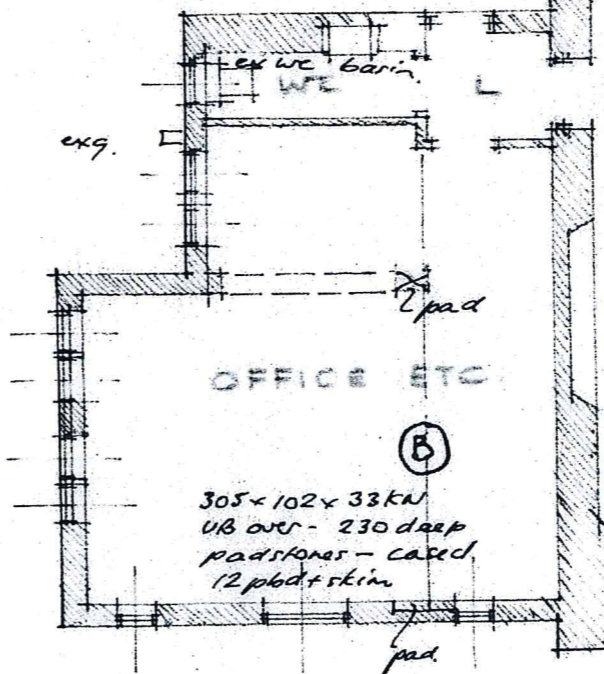
100 w insul blk laid
 flat - Furfix rs profiles
 bolted wall + ties each
 end wall to main spec
 built off. 2/ho. 203x133x
 30kg UB's set top level
 u/s floor boards + bolted
 together.



UNIT. 4

Approx 37.7 M² (406 sq ft)

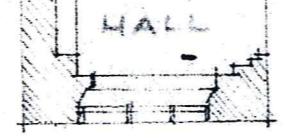
OFFICE OFFICE



UNIT. 6.

Approx - 10.4 M² (1121 sq ft)

305x102x33KN
 UB over - 230 deep
 padstones - casted
 12 pbd + skim



HALL

OFFICES.

OFFICES