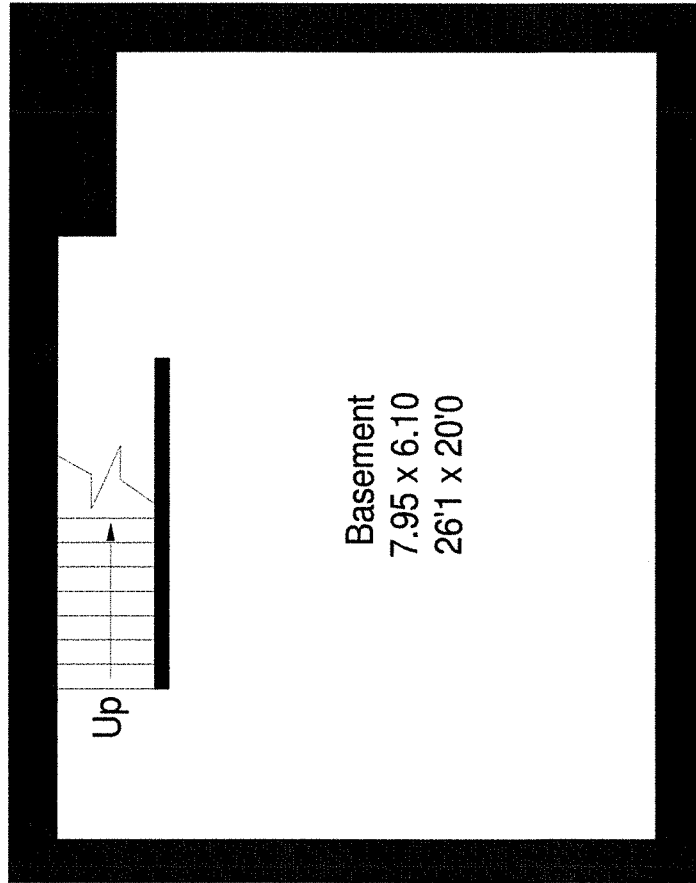
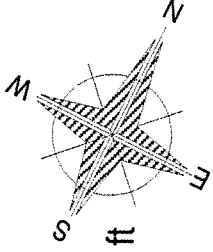
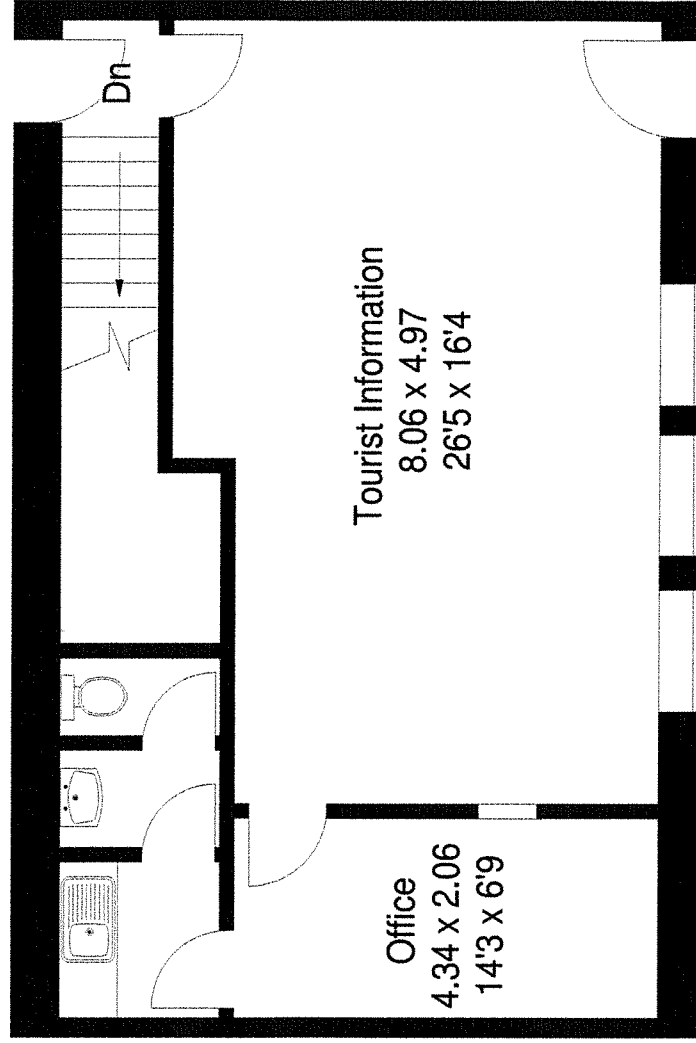


Unit 3 Tilton Court, Sherborne

Approximate Gross Internal Area :- 112 sq m / 1210 sq ft



Basement
7.95 x 6.10
26'1 x 20'0



Tourist Information
8.06 x 4.97
26'5 x 16'4

Office
4.34 x 2.06
14'3 x 6'9

Basement

Ground Floor

Floor 2 Ltd © 2016
07773 586506 Ref W771

This illustration is for identification purposes only. Measured & drawn in accordance with RICS guidelines. Not drawn to scale, unless stated. Dimensions shown are to the nearest 7.5 cm / 3" and are through cupboard / wardrobes to wall surfaces where possible or where indicated by arrow heads. Whilst every care is taken in the preparation of this plan, please check all dimensions shapes & compass bearings before making any decisions reliant upon them.